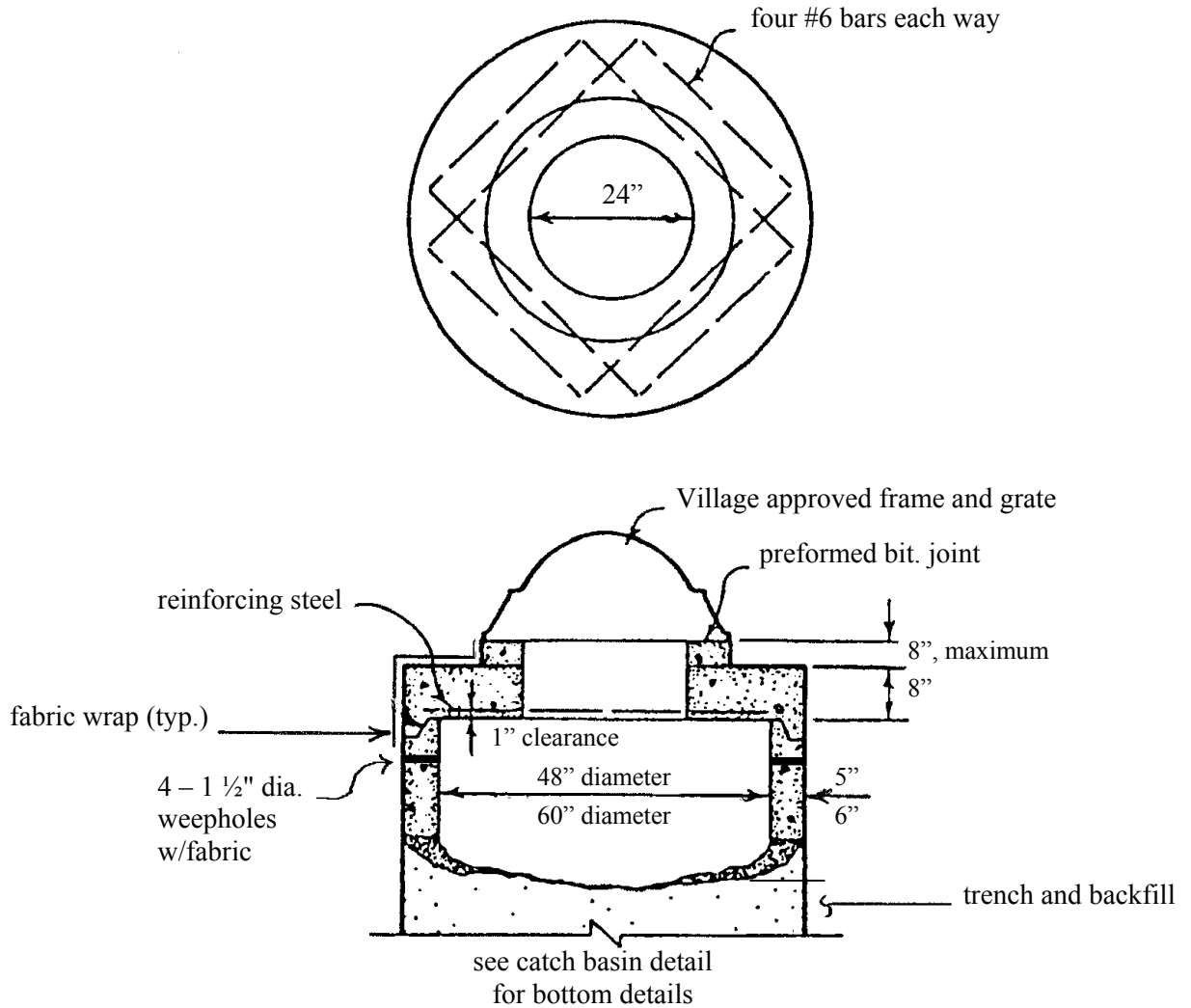


VILLAGE OF VERNON HILLS EXHIBIT NO. 8

FLAT SLAB TOP FOR STORM RESTRICTED DEPTH CATCH BASIN



Notes:

1. A 6" thick slab top may be allowed for 48" diameter restricted depth catch basins not in pavement.
2. No steps are required in restricted depth catch basins.
3. Trench and backfill required around all structures.