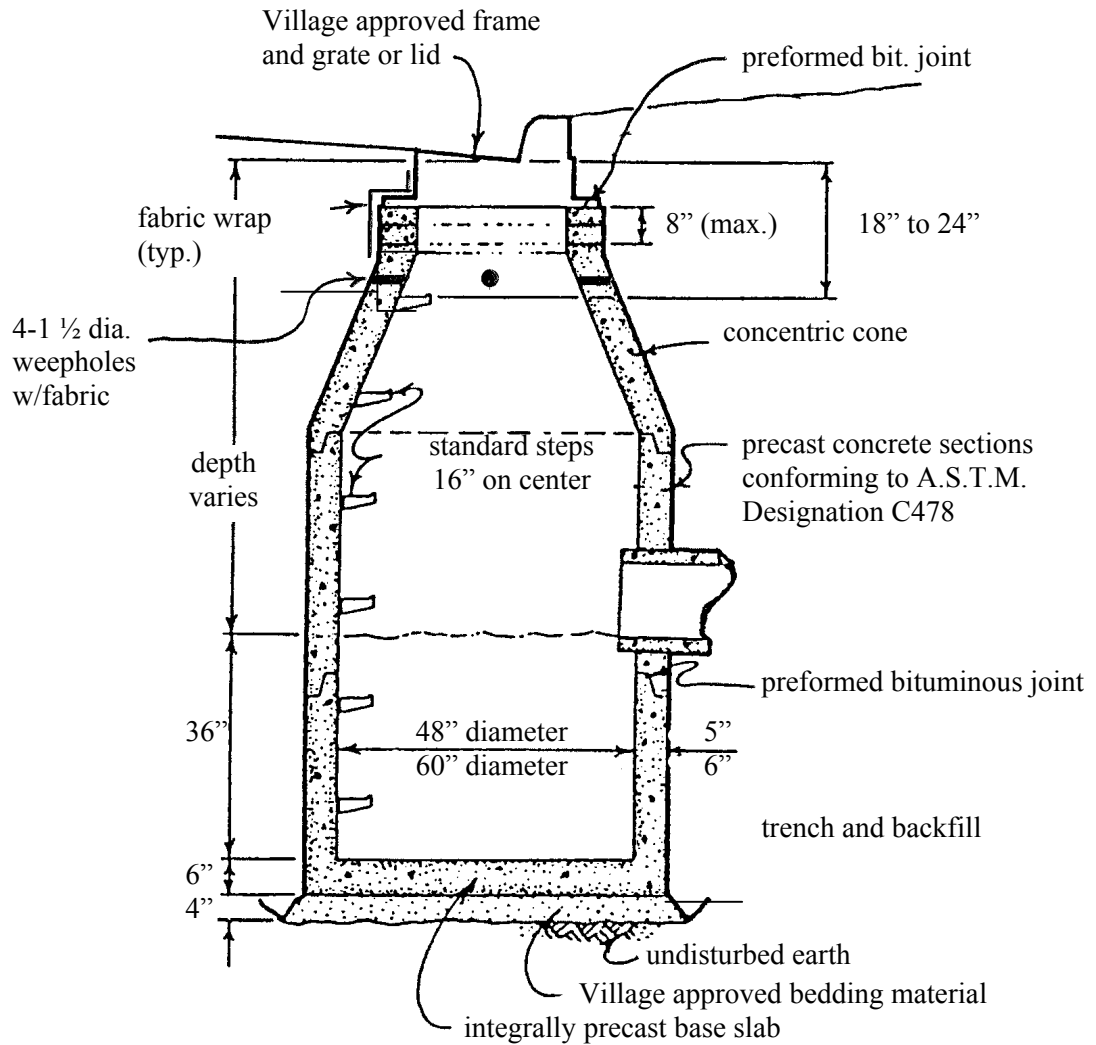


**VILLAGE OF VERNON HILLS
EXHIBIT NO. 7**

CATCH BASIN



Notes:

1. For sewer pipes 24 inches or less in diameter, use 48 inch diameter catch basin; for sewer pipes more than 24 inches in diameter, use 60 inch diameter catch basin.
2. Outlet pipe shall be no less than 12 inches in diameter.
3. Trench and backfill required around all structures.