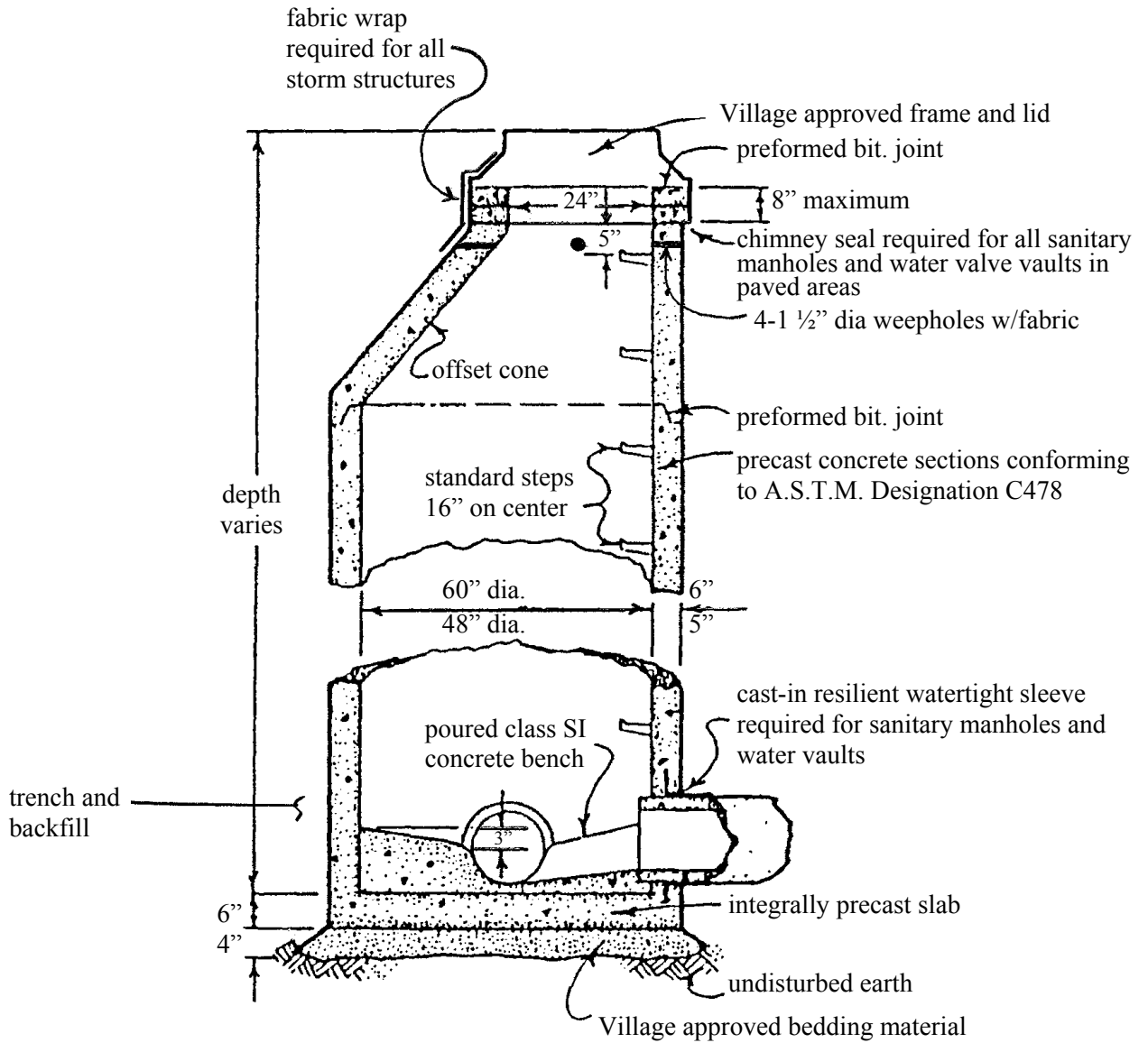


**VILLAGE OF VERNON HILLS
EXHIBIT NO. 3
STANDARD MANHOLE**



Notes:

1. For sewers 24 inches or less in diameter, use 48 inch manholes; for sewers more than 24 inches in diameter, use 60 inch manholes.
2. Closed lid structures shall have self-sealing lids.
3. Trench and backfill required around all structures.