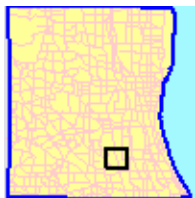
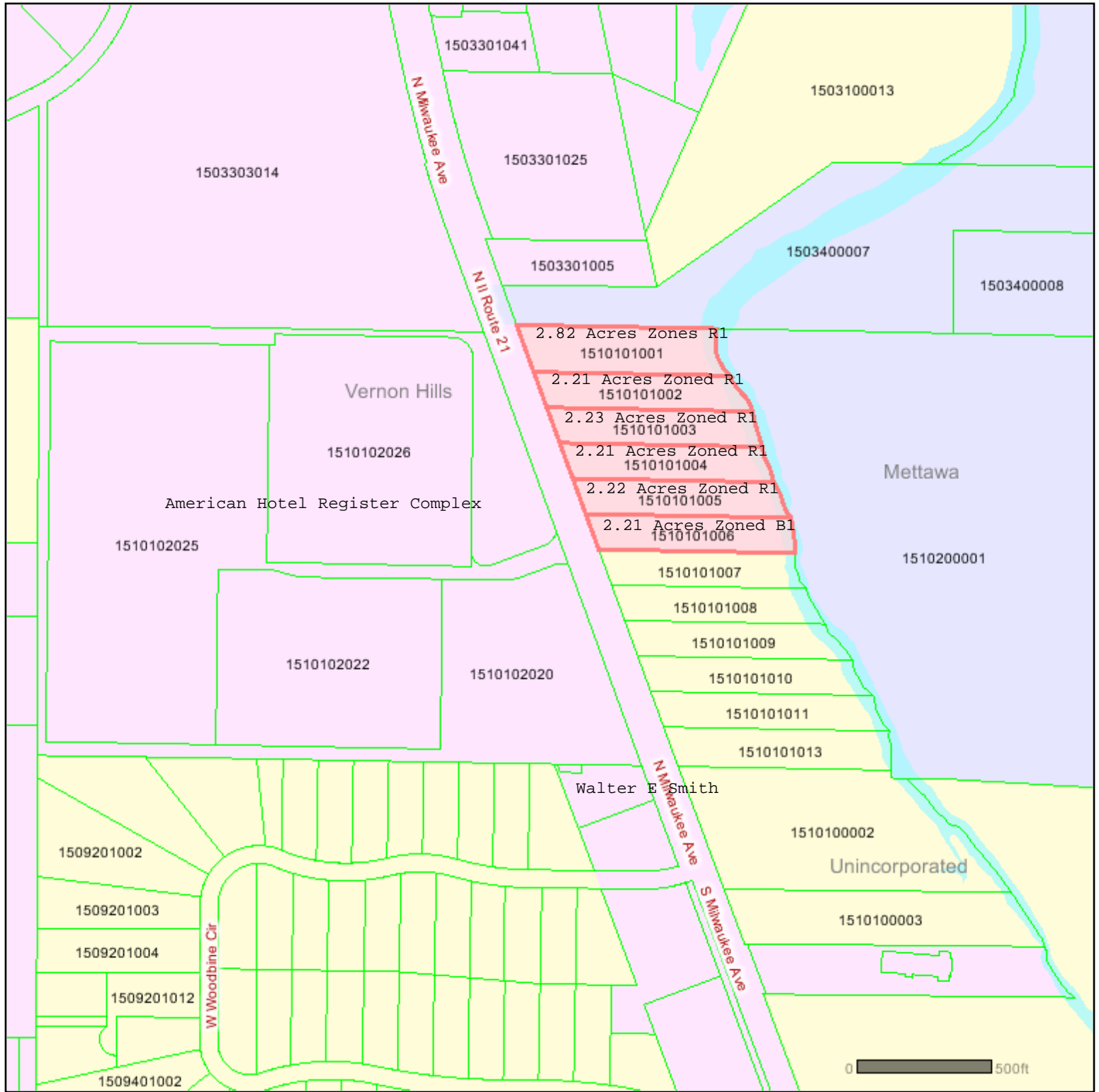


Lake County Tax Parcel Map



LakeCounty
Geographic Information System

Lake County Department of
Information and Technology
18 N County St
Waukegan IL 60085

Map Printed on 4/16/2008
Parcel 1510101001 is shaded.



- Major Roads
- Railroads
- Major Water
- Parcels
- Municipalities

Disclaimer:

This map is for general information purposes only. A Registered Land Surveyor should be consulted to determine the precise location of property boundaries on the ground. This map does not constitute a regulatory determination and is not a base for engineering design. This map is intended to be viewed and printed in color.